

TAXING UNIT : 58

EVERGREEN PARK SUBDIVISION NO.1

LOTS 57 - 78, 96, 123 - 134, 136 - 138, 158 - 164, 257 - 260

PREFIX: 23-025

WEBER COUNTY

SCALE 1" = 200'

EVERGREEN

PARK DRIVE

SEE P. 27

SEE P. 33

0038

SEE P. 19

EXCEPT WHERE OTHERWISE SHOWN, ALL LOTS ARE OWNED BY: LEWIN M. FACE & WIFE

SEE P. 28

SEE P. 26

T.7N., R.3E.

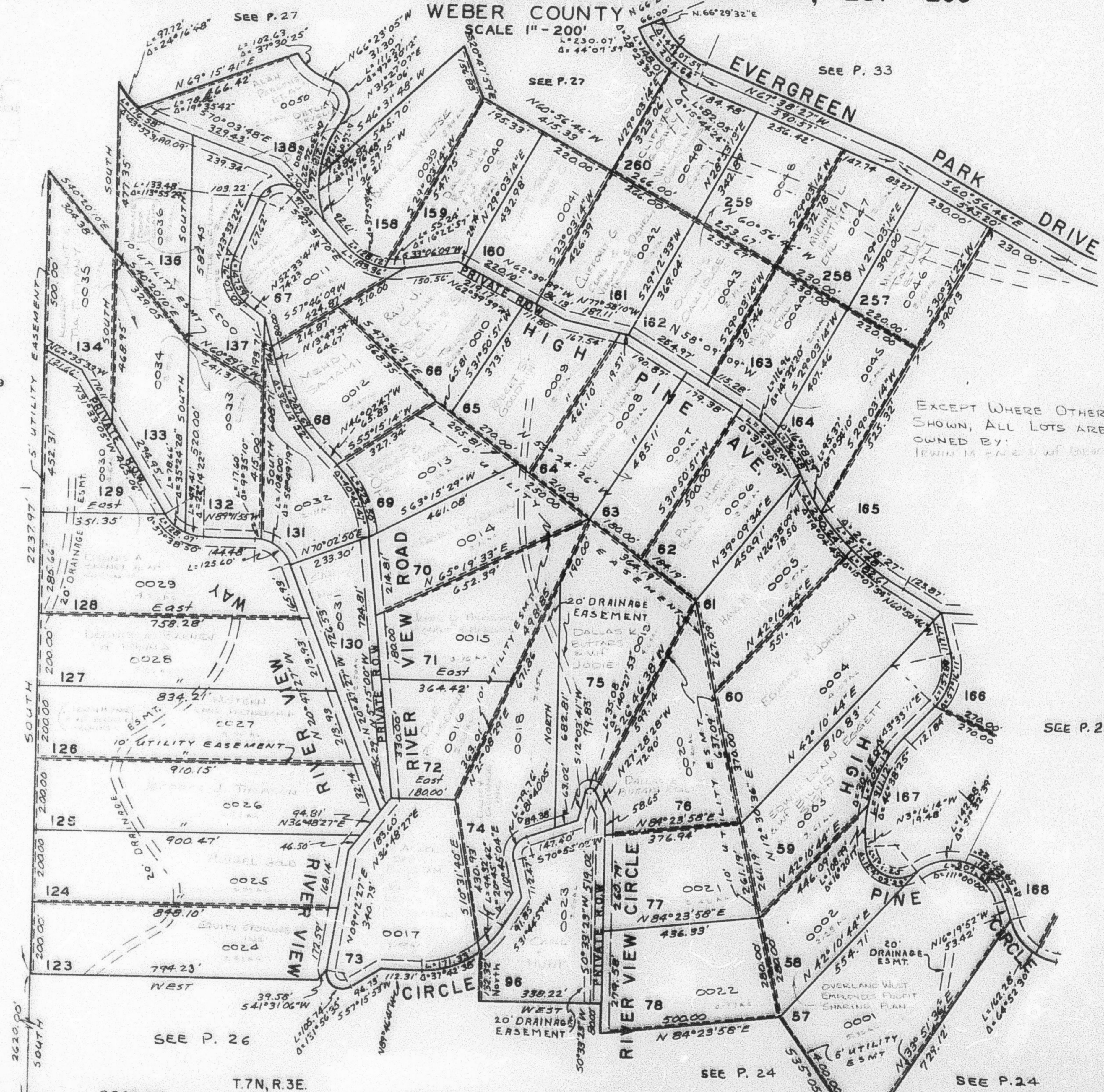
31/32

6/5

SEE P. 24

SEE P. 24

Note: See Original Plat, Book 13, Page 58 for complete Engineering Data and Lot Acrages.



2929.22'
5 89° 54' 00" E